

FLARIS BLADE

User Manual



Edition Notes

The Flaris Blade User Manual contains important information pertaining to the use of this product including operation, maintenance, and safety guidelines

Trademarks

VOLUX, the VOLUX logo and FLARIS Blade are registered trademarks or trademarks of Dynamic Visual Solutions LLC (d/b/a VOLUX and VOLUX Lighting) in the United States and other countries. Other company and product names and logos may be their own respective trademarks.

Copyright Notice

The works of authorship contained in this user manual including but not limited to, all design, text and images are owned by VOLUX.

© Copyright 2022 VOLUX Lighting. All rights reserved.

Disclaimer

All information provided within this document is intended to be accurate in all respects. However, VOLUX assumes no responsibility and specifically disclaims any and all liability to any party for any loss, damage or disruption caused by any errors or omissions in this document, whether such errors or omissions result from negligence, accident or any other cause. VOLUX reserves the right to revise the content of this document without any obligation to notify any person or company of such revision, however, VOLUX has no obligation to make, and does not commit to make, any such revisions. To download the latest version of this document, please visit voluxlighting.com

Document Version

This VOLUX Flaris Blade User Manual is the first version of this document. To download the latest version, please visit voluxlighting.com

Table of Contents

Introduction	3
Safety Information	4
Product Introduction	5
Product Dimensions	6
Rigging Information	7
Diffuser Lens	9
Power / Data Connections	10
Pixel / Strobe Layout	11
Menu Operation	12
DMX Channels & Values	14
Maintenance	21
RMA Information	22

WELCOME TO FLARIS BLADE

Introduction

What's Included*

- FLARIS Blade
- (2) Omega Adjustable Stand Base
- (2) Interconnecting Pins
- (1) 5-PIN DMX XLR Cable
- Detachable Diffusion Filter
- (2) Omega Bracket
- PowerCON TRUE1 Cable

* Your quantities may vary based on order configuration. Refer to your packing list or invoice for details.

Claims

Carefully unpack the product immediately to verify that all parts and accessories included are present and in good condition. If the box or any of the contents appear damaged or show signs of mishandling during shipping, contact the carrier immediately, not VOLUX. Failure to report damage immediately may invalidate your claim. For other issues, such as missing parts/components, or damage not related to shipping, please notify VOLUX within 7 days of delivery.

Expected LED Lifespan

LEDs naturally decline in brightness with usage over time, primarily due to heat generation. LEDs that are arranged in clusters are exposed to higher operating temperatures than a single LED. Under normal conditions, the estimated lifespan is approximately 50,000 hours. While VOLUX LED fixtures are designed with industry-leading LED cooling systems, you can extend the lifespan and brightness of your LEDs by improving the ventilation surrounding the fixture, lowering the ambient air temperature, and refrain from continuous operation at full brightness for extended periods of time. These preventative measures can also better ensure brightness and color consistency across multiple fixtures throughout their lifespan.

LIMITED WARRANTY

For detailed warranty information, please visit voluxlighting.com/warranty-information or refer to your purchase agreement.

VOLUX warrants that this product will be free from defects in material and workmanship under normal operation for the period specified in and subject to exclusions and limitations set forth in the full limited warranty on our website. This warranty specifically extends to the original purchaser and is not transferable. You must have proof of purchase from VOLUX or one of its authorized dealers to obtain warranty service that shows product name and date of purchase. Where maintenance guidelines are specified by VOLUX for products covered under this warranty, maintenance records must be maintained and supplied to VOLUX and accompany the returned product when warranty service is sought. THERE ARE NO OTHER EXPRESSED OR IMPLIED WARRANTIES.

Safety Information



THIS PRODUCT CONTAINS NO USER-SERVICEABLE PARTS. ANY REFERENCES MADE TO SERVICING THIS PRODUCT ARE FOR COMPETENT, TRAINED PERSONNEL. DO NOT ATTEMPT TO OPEN THE HOUSING OR REPAIR YOURSELF. DOING SO WILL VOID YOUR MANUFACTURER'S WARRANTY



All applicable codes and regulations apply to the proper installation of this product.

USER/AUDIENCE SAFETY:

- This product is intended for professional use only.
- Do not attempt to self-install this product if you are not familiar with stage lighting.
- Never look directly into the light source while it is on.
- Position the fixture a safe distance away from the eyes of the audience.
- Do not touch the product when operating. Housing may be hot.
- Always connect the product to grounded circuits to avoid electrocution.
- Never operate the product with damage on the housing, lenses, or cables.

MOUNTING/RIGGING SAFETY:

- Always carry the product by its grip handles.
- Always use a safety cable when suspending the fixture from above.
- Ensure all accessory and rigging hardware is tightly secured to the fixture.

POWER SAFETY:

- Do **NOT** connect this product to a dimmer rack or rheostat.
- Always ensure you are connecting the fixture to proper voltage and stable power sources.
- To prevent unnecessary wear, disconnect the product from power during periods of non-use.
- Never disconnect by pulling or tugging the power cable.
- Never connect the fixture to a cable that does not have a ground prong.

OPERATIONAL SAFETY:

- Do not place the product less than 5.0 feet (1.5m) from flammable materials or pyrotechnics.
- **IP65-RATED APPROVED FOR TEMPORARY OUTDOOR USE** - Do not submerge this product (IP65). Temporary outdoor operation is fine.
- **NOT FOR PERMANENT INSTALLATIONS WITH EXTREME ENVIRONMENTAL CONDITIONS.** This includes, but is not limited to:
 - Exposure to a marine/saline/coastal environment (within 3 miles of saltwater body of water).
 - Locations where normal high or low temperatures exceed operational temperature ratings.
 - Locations prone to flooding or being buried in snow.
- When using the product in an outdoor environment, use IP-rated power and data cables. Always secure unused power/data ports with the attached weather seal covers.
- **CAUTION:** When transferring product from extreme temperature environments, (i.e. Cold Truck to Warm, Humid Ballroom) condensation may form. Allow the product to adjust to the environment before powering on.
- Do not expose the fixture to direct sunlight or shine adjacent fixtures directly into their lenses for prolonged periods.
- Ambient operating temperature is -4° F to 112° F – Do not operate the fixture outside of this range.

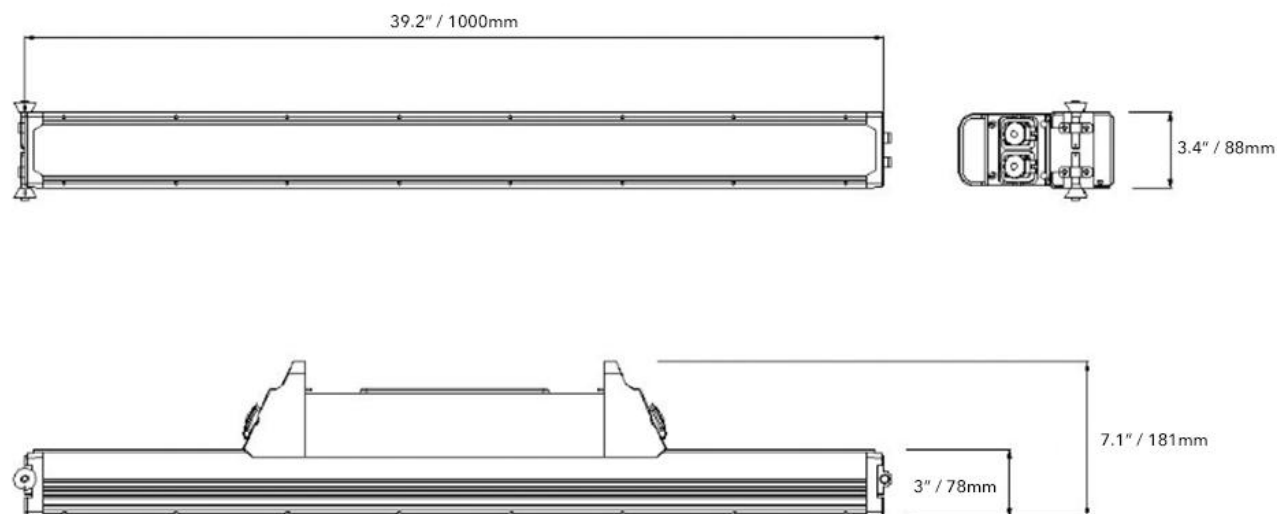


If your VOLUX product requires service, please contact VOLUX Technical Support.

Product Introduction

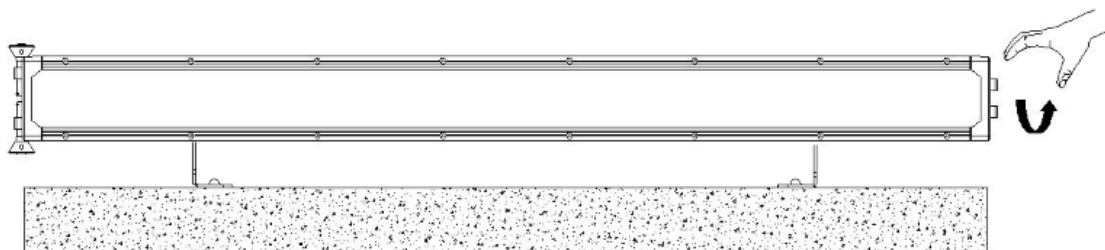
FLARIS BLADE is an IP65-rated hybrid linear fixture that offers RGBW pixel mapping combined with powerful white light strobe/blinder functionality in a single, robust form factor. It features a center strobe of 5W cool white LEDs surrounded by 224 x 2W RGBW LEDs that are independently pixel mappable into 16 segments that can be controlled via DMX or Art-Net for endless variety in color, strobe, and pixel mapping effects. The LEDs are tightly knit together at a pixel pitch of just 5mm emitting into the same tube for seamless segments. A slide-in diffusion filter is included that delivers fluid direct view looks guaranteed to be free of pixelation. The housing offers flexible rigging capabilities along with integrated multi-unit linking hardware.

Product Dimensions



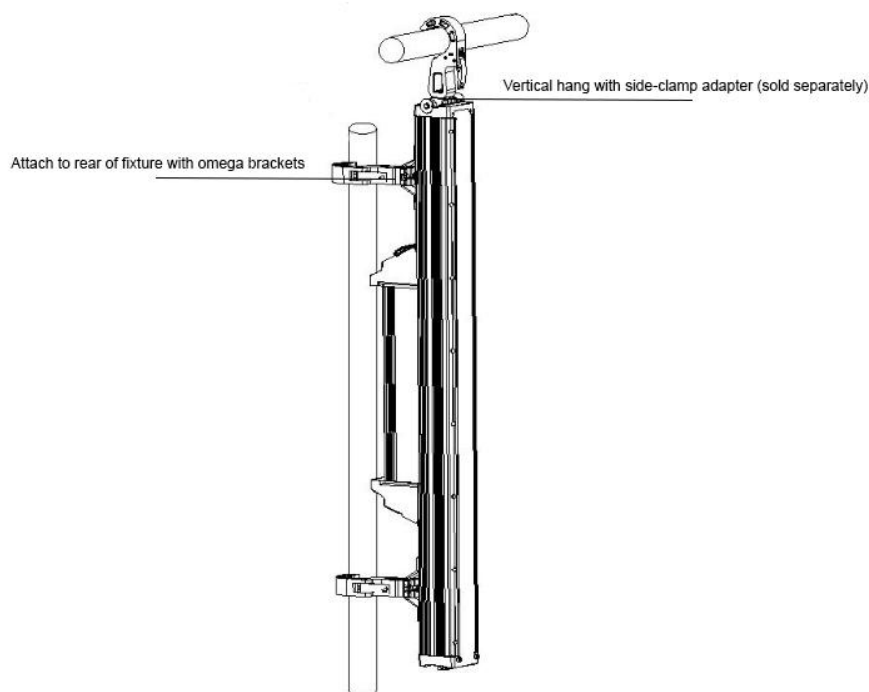
Rigging

Standing



Ensure the fixture is on a flat, stable surface. Use the included adjustable feet to attach to the omega mounts on the rear of the fixture.

Rigging



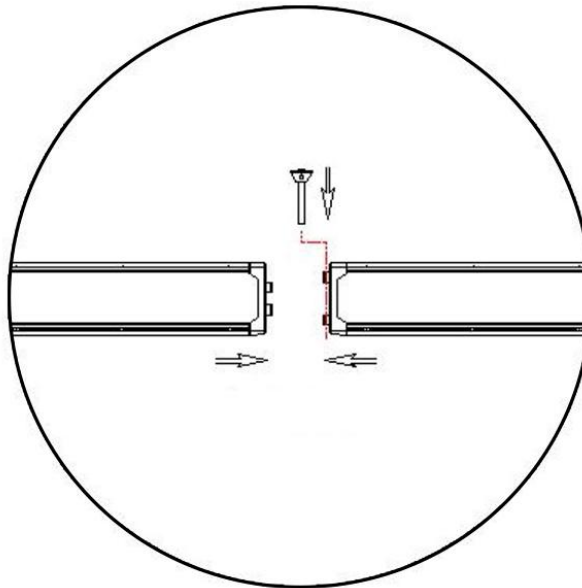
- Use the included omega brackets (2) to secure the fixture to your rigging.
- When rigging overhead, always use a safety cable. Always attach the safety cable to the dedicated loop on the fixture.

Splicing

Flaris Blade units can be physically attached for end-to-end seamless formation between adjacent units or vertical hangs from a single hang point.



A maximum of 6 units may be vertically hung using the side clamp adapter. The clamp used must support a minimum of 220 lbs / 100kg.



1. Align fixtures ensuring all adjacent units are facing the same directional orientation.
2. Slide in the male end mounting point (narrow side) to the female end mounting point (wide side).
3. Insert the rigging pins into the aligned holes.

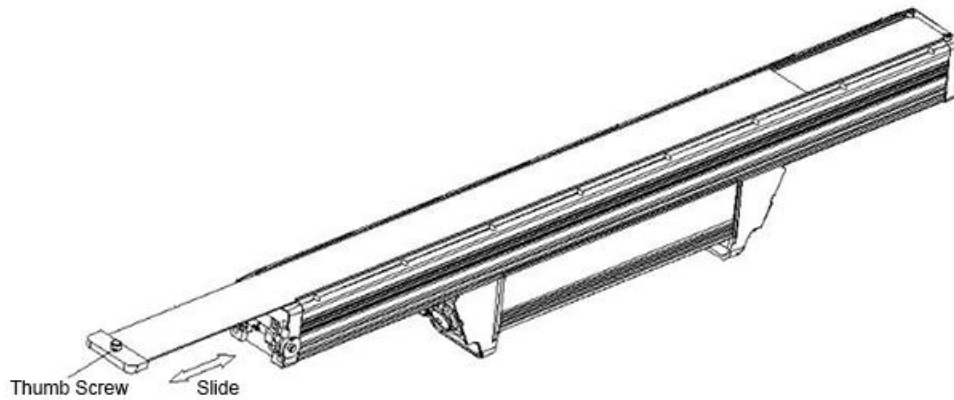


When vertically hanging the fixtures from a single point, attach a safety cable to the above adjacent fixture.

Diffuser Lens

Flaris Blade includes a slide-in milky diffuser filter. To install the filter:

1. Loosen the thumbscrews ensuring they are recessed into the thread.
2. Slide in the diffuser filter into the open side of the fixture.
3. Tighten the thumbscrews until finger tight – **Do Not Over Tighten**



**DO NOT STORE OR TRANSPORT THIS FIXTURE LENS DOWN WITH DIFFUSER ATTACHED.
GLASS BREAKAGE MAY OCCUR.**

Connections

Power Connections

FLARIS Blade has an auto-ranging power supply, it can operate with an input voltage range of 100 - 240 VAC, 50/60 Hz.



- **Always connect the fixture to a protected circuit with the appropriate ground to avoid electrocution or fire.**
- **Disconnect the fixture from power during non-use to prevent unnecessary wear and prolong its lifespan.**
- **When using this product in an outdoor IP65-type environment, be sure to use IP65 (or higher) rated data cables and secure unused ports with attached IP65 covers.**

FLARIS Blade comes with a power input cord as standard with terminated Edison (US) and PowerCON TRUE1 cable. Power linking cables can be purchased from VOLUX. FLARIS Blade supports both Neutrik® & SeeTronic branded cables.

Power Linking

FLARIS Blade integrates a PowerCON TRUE1 OUT connector to daisy-chain subsequent fixtures. You can power link multiple units based on the voltages below:

Voltage:	No. of Units:
110-120V	4
208V	6
230-240V	8

Signal Connections

You can link the FLARIS Blade to a controller or controller software using a DMX connection or an Ethernet connection. If using other Art-Net™ compatible products with FLARIS Blade, you can control each individually on a single network.

DMX Connection

FLARIS Blade uses a 5-pin DMX data connection for its DMX personalities. 13ch, 64ch, 89ch Modes

Art-Net Connection

Art-Net™ is an Ethernet protocol that uses TCP/IP which transfers a large amount of DMX512 data using a Neutrik® etherCON® RJ45 connection over a large network. FLARIS Blade can receive Art-Net signal in its dedicated ARTNET personality modes allowing independent universes to be set for Strobe & RGBW zones.* VOLUX Professional recommends using unicast Art-Net™ for best results. Art-Net™ designed by and copyrighted by Artistic Licence Holdings Ltd.

RDM (Remote Device Management)

Remote Device Management, or RDM, is a standard for allowing DMX-enabled devices to communicate bi-directionally along existing DMX cabling. Check the DMX controller's User Manual or with the manufacturer as not all DMX controllers have this capability. FLARIS Blade supports RDM protocol that allows feedback to make changes to menu map options.

Pixel Zones



Menu Operation

Fixture Password: [UP], [DOWN], [UP], [DOWN], [ENTER]

Main Level	Parameter	Options / Values	Description
DMX	Address	001 - 512	DMX Address
NET IP	IP Address		ArtNet IP Address (192.168.1.1)
	SubMask		ArtNet SubNet Mask
SET UNIVERSE	Strobe	0 - 32767	Sets ArtNet universe for Center Strobe Segments
	Aura	0 - 32767	Sets ArtNet universe for RGBW Pixel Segments
CHANNEL MODE	DMX Channel Modes	13ch Mode	13ch DMX Personality (DMX Only)
		64ch Mode	64ch DMX Personality (Pixel Mapping, Strobe Disabled)
		89ch Mode	89ch DMX Personality (Extended Mode, DMX Only)
	ArtNet Channel Modes	4ch-N Mode	4ch ArtNet Personality (Dimmer, Strobe, Macro)
		20ch-N Mode	20ch ArtNet Personality (16 Segments, Dimmer, Strobe)
Manual	Dimmer	0 - 255	Master Dimmer Control (Strobe & RGBW Segments)
	Strobe	0 - 255	Master Shutter/Strobe Speed (Strobe & RGBW Segments)
	Macro 1	0 - 255	Center Strobe Macros
	Macro S1	0 - 255	Center Strobe Macro Speed (Fast-to-Slow)
	Macro 2	0 - 255	RGBW Pixel Macros
	Macro S2	0 - 255	RGBW Pixel Macro Speed (Fast-to-Slow)
	Macro 2 ColorF	0 - 255	Foreground Color of RGBW Pixel Macros
	Macro 2 ColorB	0 - 255	Background Color of RGBW Pixel Macros
	White-S	0 - 255	Center Strobe Segement (0 - 100%)
	Red	0 - 255	Outer Pixel Segements RED (0 - 100%)

	Green	0 - 255	Outer Pixel Segements GREEN (0 - 100%)
	Blue	0 - 255	Outer Pixel Segements BLUE (0 - 100%)
	White-C	0 - 255	Outer Pixel Segements WHITE (0 - 100%)
Auto Program	Show-W	0 - 12	Strobe Segment Auto Program Macro
	Speed-W	0 - 10	Strobe Segment Auto Program Speed (Fast-to-Slow)
	Show-RGBW	0 - 10	RGBW Segment Auto Program Macro
	Speed-RBGW	0 - 10	RGBW Segment Auto Program Speed (Fast-to-Slow)
	ColorF	0 - 255	Foreground Color of RGBW Pixel Macros
	ColorB	0 - 255	Background Color of RGBW Pixel Macros
DISPLAY	Language	English / Chinese	Fixture display language
	Display Direction	Normal / Reverse	Orientation of LCD Display
	BackLight	30S / ON	LCD backlight, Always On or Off after 30s
PARAMETER			(reserved)
DEFAULT		YES / NO	Resets fixture settings to defaults
INFO	Version		Fixture Firmware Version
	Temperature		Fixture Operating Temperature
	Channel		Displays Active Channels Values
	RDM		Displays Fixture RDM ID

DMX Channels

MODE 1 - 13CH DMX (Macro FX)			
Channel Priority			
Dimmer > Macros > Macro Colors > Shutter > RGBW Intensity			
Channel	Parameter	Value	Function
1	Master Dimmer	0 - 255	0 - 100% Dimmer Intensity of Both Strobe & Color Pixels
2	Shutter/Strobe	0 - 4	Open (Default)
		5 - 130	Strobe, Slow to Fast
		131 - 179	Pulse Ramp Up, Slow to Fast
		181 - 229	Pulse Ramp Down, Slow to Fast
		230 - 249	Random Pixel Pulse, Slow to Fast
		250 - 255	Open
3	Macro 1 - Strobe FX	0 - 4	No Functions
		5 - 24	Strobe Macro 1
		25 - 44	Strobe Macro 2
		45 - 64	Strobe Macro 3
		65 - 84	Strobe Macro 4
		85 - 104	Strobe Macro 5
		105 - 124	Strobe Macro 6
		125 - 144	Strobe Macro 7
		145 - 164	Strobe Macro 8
		165 - 184	Strobe Macro 9
		185 - 204	Strobe Macro 10
		205 - 224	Strobe Macro 11
		225 - 244	Strobe Macro 12
		245 - 255	Strobe Macro 13
4	Macro 1 Speed	0 - 2	No Function
		3 - 255	Strobe Macro Speed, Fast to Slow
5	Macro 2 - RGBW Color FX (Set Foreground & Background Channels 7 and 8)	0 - 4	No Functions
		5 - 29	Static Virtual Color Wheel (All Pixels)

		30 - 39	Color FX Macro 1
		40 - 49	Color FX Macro 2
		50 - 59	Color FX Macro 3
		60 - 69	Color FX Macro 4
		70 - 79	Color FX Macro 5
		80 - 89	Color FX Macro 6
		90 - 109	Color FX Macro 7
		110 - 129	Color FX Macro 8
		130 - 149	Color FX Macro 9
		150 - 169	Color FX Macro 10 - <i>Rainbow (Channels 7 & 8 Ignored)</i>
		170 - 189	Color FX Macro 11 - <i>Rainbow (Channels 7 & 8 Ignored)</i>
		190 - 209	Color FX Macro 12 - <i>Rainbow (Channels 7 & 8 Ignored)</i>
		210 - 229	Color FX Macro 13 - <i>Rainbow (Channels 7 & 8 Ignored)</i>
		230 - 249	Color FX Macro 14 - <i>Rainbow (Channels 7 & 8 Ignored)</i>
		249 - 255	Color FX Macro 15 - <i>Rainbow (Channels 7 & 8 Ignored)</i>
6	RGBW FX Macro 2 Speed	0 - 2	No Function
		3 - 255	RGBW Color Macro Speed, Fast to Slow
7	Macro 2 Foreground Color	0 - 255	Virtual Color Wheel (1 Value Increments)
8	Macro 2 Background Color	0 - 255	Virtual Color Wheel (1 Value Increments)
9	Center Strobe Intensity	0 - 255	0 - 100% (Controls all pixels)
10	Pixel Intensity - Red	0 - 255	0 - 100% (Controls all pixels)
11	Pixel Intensity - Green	0 - 255	0 - 100% (Controls all pixels)
12	Pixel Intensity - Blue	0 - 255	0 - 100% (Controls all pixels)
13	Pixel Intensity - White	0 - 255	0 - 100% (Controls all pixels)
MODE 2 - 64CH DMX - RGBW Pixel - <i>Strobe Disabled</i> - 16 Segements			
1	Red - Zone 1	0 - 255	0 - 100%
2	Green - Zone 1	0 - 255	0 - 100%
3	Blue - Zone 1	0 - 255	0 - 100%
4	White - Zone 1	0 - 255	0 - 100%
5	Red - Zone 2	0 - 255	0 - 100%
6	Green - Zone 2	0 - 255	0 - 100%
7	Blue - Zone 2	0 - 255	0 - 100%

8	White - Zone 2	0 - 255	0 - 100%
9	Red - Zone 3	0 - 255	0 - 100%
10	Green - Zone 3	0 - 255	0 - 100%
11	Blue - Zone 3	0 - 255	0 - 100%
12	White - Zone 3	0 - 255	0 - 100%
13	Red - Zone 4	0 - 255	0 - 100%
14	Green - Zone 4	0 - 255	0 - 100%
15	Blue - Zone 4	0 - 255	0 - 100%
16	White - Zone 4	0 - 255	0 - 100%
17	Red - Zone 5	0 - 255	0 - 100%
18	Green - Zone 5	0 - 255	0 - 100%
19	Blue - Zone 5	0 - 255	0 - 100%
20	White - Zone 5	0 - 255	0 - 100%
21	Red - Zone 6	0 - 255	0 - 100%
22	Green - Zone 6	0 - 255	0 - 100%
23	Blue - Zone 6	0 - 255	0 - 100%
24	White - Zone 6	0 - 255	0 - 100%
25	Red - Zone 7	0 - 255	0 - 100%
26	Green - Zone 7	0 - 255	0 - 100%
27	Blue - Zone 7	0 - 255	0 - 100%
28	White - Zone 7	0 - 255	0 - 100%
29	Red - Zone 8	0 - 255	0 - 100%
30	Green - Zone 8	0 - 255	0 - 100%
31	Blue - Zone 8	0 - 255	0 - 100%
32	White - Zone 8	0 - 255	0 - 100%
33	Red - Zone 9	0 - 255	0 - 100%
34	Green - Zone 9	0 - 255	0 - 100%
35	Blue - Zone 9	0 - 255	0 - 100%
36	White - Zone 9	0 - 255	0 - 100%
37	Red - Zone 10	0 - 255	0 - 100%
38	Green - Zone 10	0 - 255	0 - 100%
39	Blue - Zone 10	0 - 255	0 - 100%
40	White - Zone 10	0 - 255	0 - 100%
41	Red - Zone 11	0 - 255	0 - 100%
42	Green - Zone 11	0 - 255	0 - 100%
43	Blue - Zone 11	0 - 255	0 - 100%
44	White - Zone 11	0 - 255	0 - 100%
45	Red - Zone 12	0 - 255	0 - 100%
46	Green - Zone 12	0 - 255	0 - 100%
47	Blue - Zone 12	0 - 255	0 - 100%
48	White - Zone 12	0 - 255	0 - 100%
49	Red - Zone 13	0 - 255	0 - 100%

50	Green - Zone 13	0 - 255	0 - 100%
51	Blue - Zone 13	0 - 255	0 - 100%
52	White - Zone 13	0 - 255	0 - 100%
53	Red - Zone 14	0 - 255	0 - 100%
54	Green - Zone 14	0 - 255	0 - 100%
55	Blue - Zone 14	0 - 255	0 - 100%
56	White - Zone 14	0 - 255	0 - 100%
57	Red - Zone 15	0 - 255	0 - 100%
58	Green - Zone 15	0 - 255	0 - 100%
59	Blue - Zone 15	0 - 255	0 - 100%
60	White - Zone 15	0 - 255	0 - 100%
61	Red - Zone 16	0 - 255	0 - 100%
62	Green - Zone 16	0 - 255	0 - 100%
63	Blue - Zone 16	0 - 255	0 - 100%
64	White - Zone 16	0 - 255	0 - 100%

MODE 3 - 89CH DMX (Extended + Pixel)

Channel Priority

Dimmer > Macros > Macro Colors > Shutter > RGBW Intensity

Channel	Parameter	Value	Function
1	Strobe Dimmer	0 - 255	Master Dimming of Center Strobe, 0 - 100%
2	RGBW Dimmer	0 - 255	Master Dimming of RGBW Pixels, 0 - 100%
3	Shutter/Strobe	0 - 4	Open (Default)
		5 - 130	Strobe, Slow to Fast
		131 - 179	Pulse Ramp Up, Slow to Fast
		181 - 229	Pulse Ramp Down, Slow to Fast
		230 - 249	Random Pixel Pulse, Slow to Fast
		250 - 255	Open
4	Macro 1 - Strobe FX	0 - 4	No Functions
		5 - 24	Strobe Macro 1
		25 - 44	Strobe Macro 2
		45 - 64	Strobe Macro 3
		65 - 84	Strobe Macro 4
		85 - 104	Strobe Macro 5
		105 - 124	Strobe Macro 6
		125 - 144	Strobe Macro 7
		145 - 164	Strobe Macro 8
		165 - 184	Strobe Macro 9

		185 - 204	Strobe Macro 10
		205 - 224	Strobe Macro 11
		225 - 244	Strobe Macro 12
		245 - 255	Strobe Macro 13
5	Macro 1 Speed	0 - 2	No Function
		3 - 255	Strobe Macro Speed, Fast to Slow
6	Macro 2 - RGBW Color FX (Set Foreground & Background Colors in Channels 7 and 8)	0 - 4	No Functions
		5 - 29	Static Virtual Color Wheel (All Pixels)
		30 - 39	Color FX Macro 1
		40 - 49	Color FX Macro 2
		50 - 59	Color FX Macro 3
		60 - 69	Color FX Macro 4
		70 - 79	Color FX Macro 5
		80 - 89	Color FX Macro 6
		90 - 109	Color FX Macro 7
		110 - 129	Color FX Macro 8
		130 - 149	Color FX Macro 9
		150 - 169	Color FX Macro 10 - <i>Rainbow (Channels 7 & 8 Ignored)</i>
		170 - 189	Color FX Macro 11 - <i>Rainbow (Channels 7 & 8 Ignored)</i>
		190 - 209	Color FX Macro 12 - <i>Rainbow (Channels 7 & 8 Ignored)</i>
		210 - 229	Color FX Macro 13 - <i>Rainbow (Channels 7 & 8 Ignored)</i>
		230 - 249	Color FX Macro 14 - <i>Rainbow (Channels 7 & 8 Ignored)</i>
		249 - 255	Color FX Macro 15 - <i>Rainbow (Channels 7 & 8 Ignored)</i>
7	RGBW FX Macro 2 Speed	0 - 2	No Function
		3 - 255	RGBW Color Macro Speed, Fast to Slow
8	Macro 2 Foreground Color	0 - 255	Virtual Color Wheel (1 Value Increments)
9	Macro 2 Background Color	0 - 255	Virtual Color Wheel (1 Value Increments)
10	Strobe - Zone 1	0 - 255	0 - 100%
11	Strobe - Zone 2	0 - 255	0 - 100%
12	Strobe - Zone 3	0 - 255	0 - 100% (Controls all pixels)
13	Strobe - Zone 4	0 - 255	0 - 100% (Controls all pixels)
14	Strobe - Zone 5	0 - 255	0 - 100% (Controls all pixels)
15	Strobe - Zone 6	0 - 255	0 - 100%
16	Strobe - Zone 7	0 - 255	0 - 100%
17	Strobe - Zone 8	0 - 255	0 - 100%
18	Strobe - Zone 9	0 - 255	0 - 100%
19	Strobe - Zone 10	0 - 255	0 - 100%
20	Strobe - Zone 11	0 - 255	0 - 100%
21	Strobe - Zone 12	0 - 255	0 - 100%
22	Strobe - Zone 13	0 - 255	0 - 100%

23	Strobe - Zone 14	0 - 255	0 - 100%
24	Strobe - Zone 15	0 - 255	0 - 100%
25	Strobe - Zone 16	0 - 255	0 - 100%
26	Red - Zone 1	0 - 255	0 - 100%
27	Green - Zone 1	0 - 255	0 - 100%
28	Blue - Zone 1	0 - 255	0 - 100%
29	White - Zone 1	0 - 255	0 - 100%
30	Red - Zone 2	0 - 255	0 - 100%
31	Green - Zone 2	0 - 255	0 - 100%
32	Blue - Zone 2	0 - 255	0 - 100%
33	White - Zone 2	0 - 255	0 - 100%
34	Red - Zone 3	0 - 255	0 - 100%
35	Green - Zone 3	0 - 255	0 - 100%
36	Blue - Zone 3	0 - 255	0 - 100%
37	White - Zone 3	0 - 255	0 - 100%
38	Red - Zone 4	0 - 255	0 - 100%
39	Green - Zone 4	0 - 255	0 - 100%
40	Blue - Zone 4	0 - 255	0 - 100%
41	White - Zone 4	0 - 255	0 - 100%
42	Red - Zone 5	0 - 255	0 - 100%
43	Green - Zone 5	0 - 255	0 - 100%
44	Blue - Zone 5	0 - 255	0 - 100%
45	White - Zone 5	0 - 255	0 - 100%
46	Red - Zone 6	0 - 255	0 - 100%
47	Green - Zone 6	0 - 255	0 - 100%
48	Blue - Zone 6	0 - 255	0 - 100%
49	White - Zone 6	0 - 255	0 - 100%
50	Red - Zone 7	0 - 255	0 - 100%
51	Green - Zone 7	0 - 255	0 - 100%
52	Blue - Zone 7	0 - 255	0 - 100%
53	White - Zone 7	0 - 255	0 - 100%
54	Red - Zone 8	0 - 255	0 - 100%
55	Green - Zone 8	0 - 255	0 - 100%
56	Blue - Zone 8	0 - 255	0 - 100%
57	White - Zone 8	0 - 255	0 - 100%
58	Red - Zone 9	0 - 255	0 - 100%
59	Green - Zone 9	0 - 255	0 - 100%
60	Blue - Zone 9	0 - 255	0 - 100%
61	White - Zone 9	0 - 255	0 - 100%
62	Red - Zone 10	0 - 255	0 - 100%

63	Green - Zone 10	0 - 255	0 - 100%
64	Blue - Zone 10	0 - 255	0 - 100%
65	White - Zone 10	0 - 255	0 - 100%
66	Red - Zone 11	0 - 255	0 - 100%
67	Green - Zone 11	0 - 255	0 - 100%
68	Blue - Zone 11	0 - 255	0 - 100%
69	White - Zone 11	0 - 255	0 - 100%
70	Red - Zone 12	0 - 255	0 - 100%
71	Green - Zone 12	0 - 255	0 - 100%
72	Blue - Zone 12	0 - 255	0 - 100%
73	White - Zone 12	0 - 255	0 - 100%
74	Red - Zone 13	0 - 255	0 - 100%
75	Green - Zone 13	0 - 255	0 - 100%
76	Blue - Zone 13	0 - 255	0 - 100%
77	White - Zone 13	0 - 255	0 - 100%
78	Red - Zone 14	0 - 255	0 - 100%
79	Green - Zone 14	0 - 255	0 - 100%
80	Blue - Zone 14	0 - 255	0 - 100%
81	White - Zone 14	0 - 255	0 - 100%
82	Red - Zone 15	0 - 255	0 - 100%
83	Green - Zone 15	0 - 255	0 - 100%
84	Blue - Zone 15	0 - 255	0 - 100%
85	White - Zone 15	0 - 255	0 - 100%
86	Red - Zone 16	0 - 255	0 - 100%
87	Green - Zone 16	0 - 255	0 - 100%
88	Blue - Zone 16	0 - 255	0 - 100%
89	White - Zone 16	0 - 255	0 - 100%

Maintenance

FIXTURE MAINTENANCE

Dust accumulation can reduce light output performance and cause overheating. This can lead to a reduction in light source life and/or mechanical wear. To maintain optimal performance and reduce wear, clean your lighting products at least once a month. However, be aware that usage and environmental conditions could be contributing factors to increase the cleaning frequency.

To clean the product, follow the instructions below:

1. Unplug the product from power.
2. Wait until the product is at room temperature.
3. Use a vacuum (or dry compressed air) and a soft brush to remove dust collected on the external surface/vents.
4. Clean all transparent surfaces with a mild soap solution or ammonia-free glass cleaner.
5. Apply the solution directly to a soft, lint-free cotton cloth or a lens cleaning tissue.
6. Softly drag any dirt or grime to the outside of the transparent surface.
7. Gently polish the transparent surfaces until they are free of haze and lint.



Do not spin the cooling fans with compressed air, damage can occur.

RMA Returns

RMA Procedure

To obtain an RMA, please contact support@voluxlighting.com or your designated representative with a written description of the problem you are experiencing to obtain an RMA number. Upon receiving an RMA number, the product/component must be packaged in original packaging or other suitable packaging that provides ample protection from ground/air shipping and provide your representative with packaging dimensions to receive an RMA shipping label. All RMA shipments must include proof of purchase, written maintenance records, and a brief written description of the problem being experienced for the unit being returned for service. The product/component must be returned in original, unaltered condition without accessories unless otherwise instructed to do so. Products returned for warranty service, which are received damaged due to inadequate and/or improper packaging and/or due to damage caused by shipping carrier may incur additional repair charges before warranty service begins and/or may void this warranty. Any products returned without a valid RMA will be refused and returned at the customer's expense. Failure to follow these RMA procedures may result in denial of warranty service or additional material/labor costs billable to the customer.

RMA Procedure

If it is determined that the product does not meet the terms of our warranty, you will be billed for labor and materials, as well as applicable shipping and insurance. Appropriate shipping charges will be applied. Payment in advance of repair is required by credit card. VOLUX will contact you and inform you of the cost of the repair before any work is completed.



VOLUX LIGHTING

Voluxlighting.com

(866) 212-5505